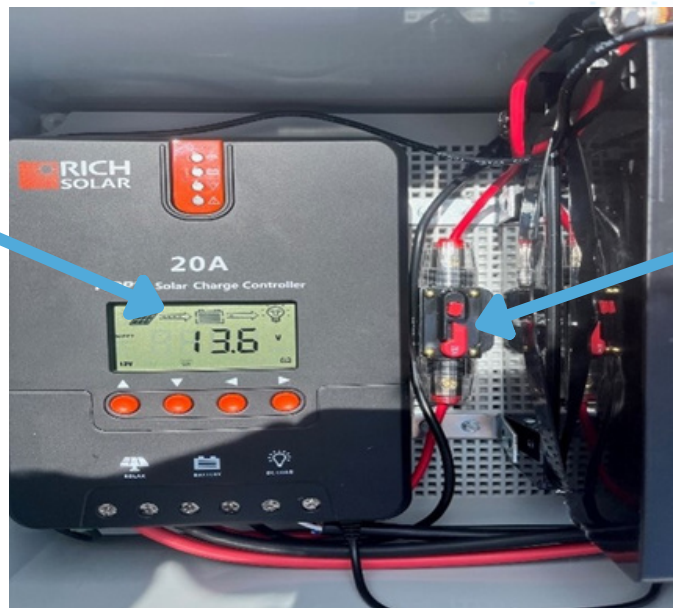


Eyrus Solar Unit Instructions



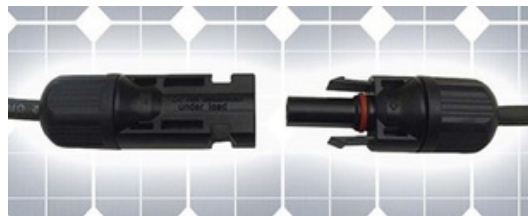
1. Unbox the Battery box, Eyrus BLE reader, mount and panel. Make sure all the necessary parts are included to install the mount.
2. Test the Battery box and panel before beginning the installation.
 - a. Open the battery box and flip the breaker into the on position (see picture below).

Both arrows will indicate power is being transferred when everything is connected.



Flipped into on position, push button above to cut connection to battery.

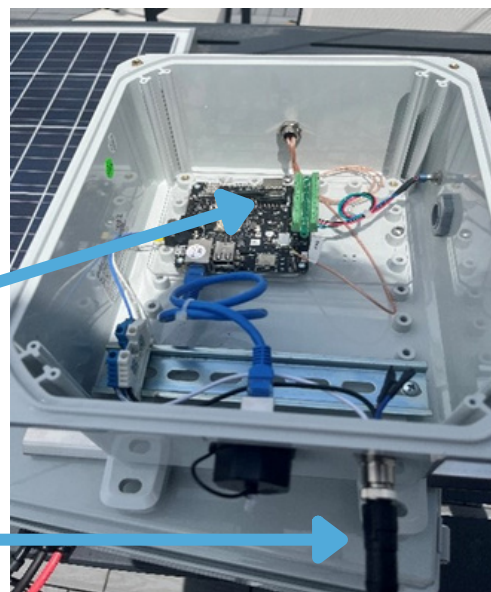
- b. With the panel completely unboxed, plug the male and female connections from the panel into the battery box male and female connections (see picture below). PAY ATTENTION MAKE SURE THAT THE PLUG COMING FROM THE PANEL IS THE POSITIVE GOING INTO THE POSITIVE AND NEGATIVE INTO NEGATIVE. IF THAT IS NOT POSSIBLE PLEASE CONTACT SUPPORT FOR FURTHER INSTRUCTIONS.



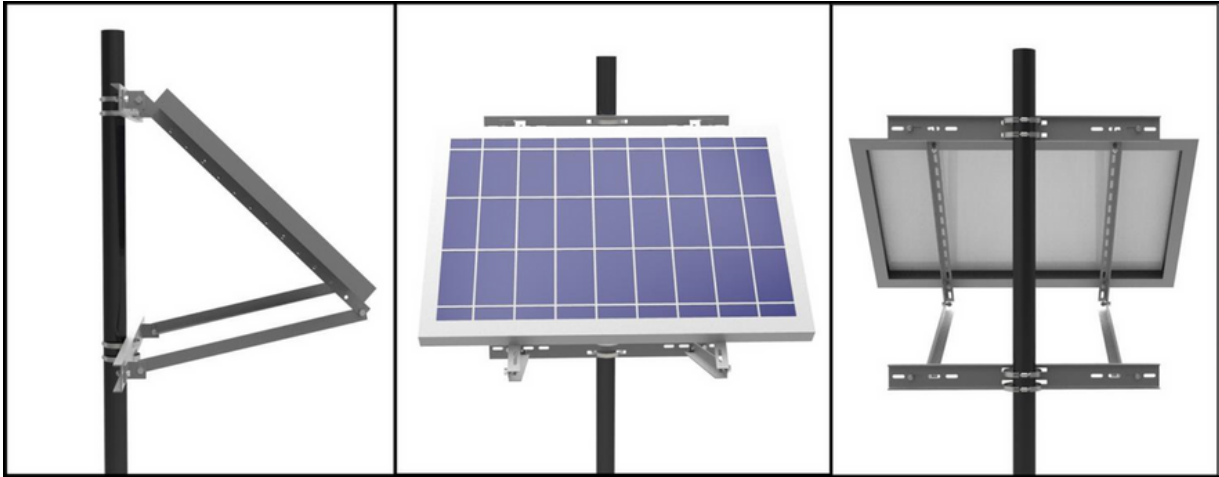
- c. Locate the power cord coming off of the battery box and plug that into the BLE box with the Eyrus label on it. Unscrew the top of the box and visually confirm the box is getting power through the lights on the board (see below) Once everything is confirmed as powered you are ready to install the unit in place.

Lights indicating unit is receiving.

Power Cord from battery box.



Side Pole Mount Installation

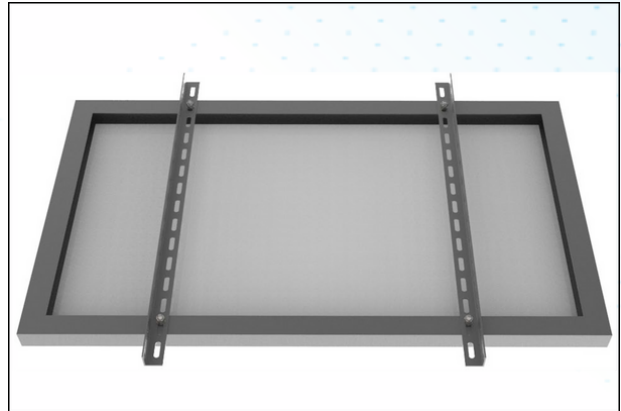
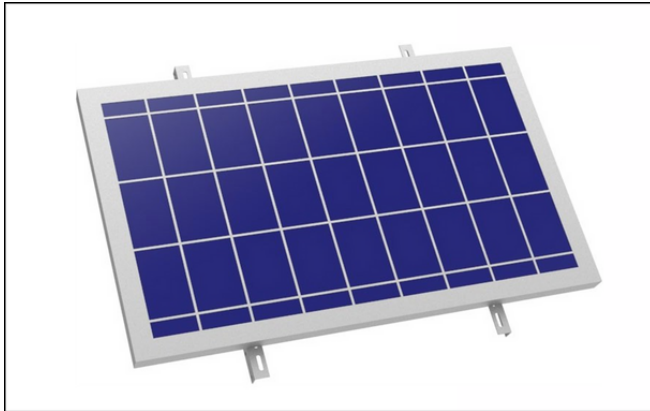


Components

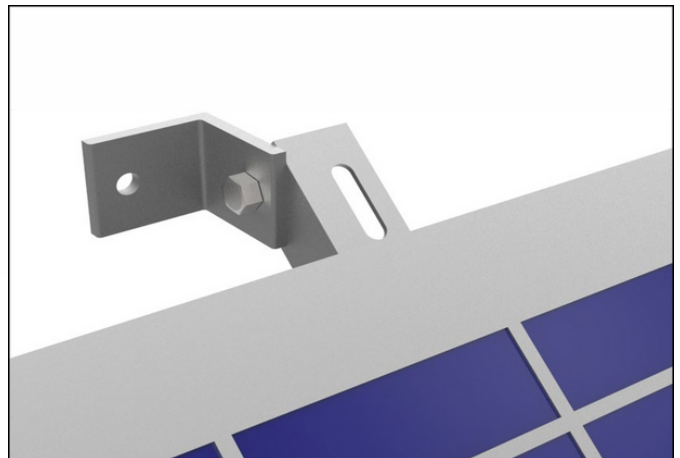
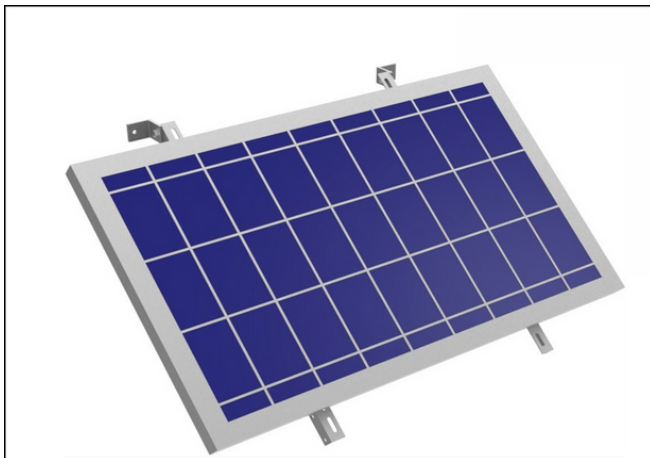
1	2	3	4	5	6
AL6005	AL6005	AL6005	AL6005	SUS304	SUS304

Mounting Steps

1. Connect the mounting brackets to mounting holes of panels with M8 screws.

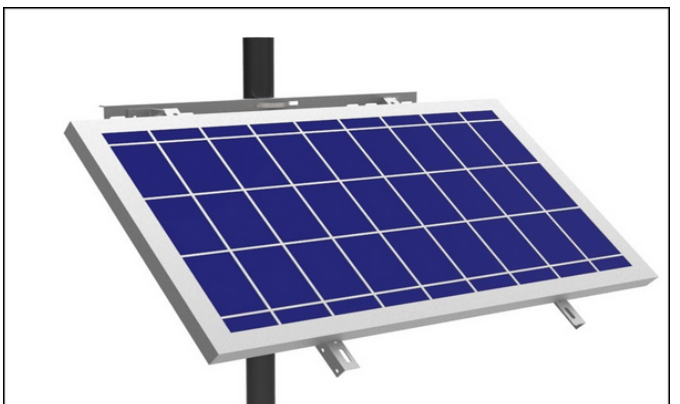
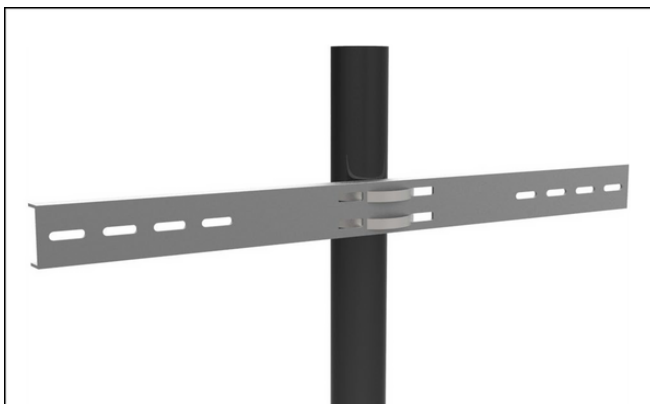


2. Fix the L feet to the brackets with M8 screws.



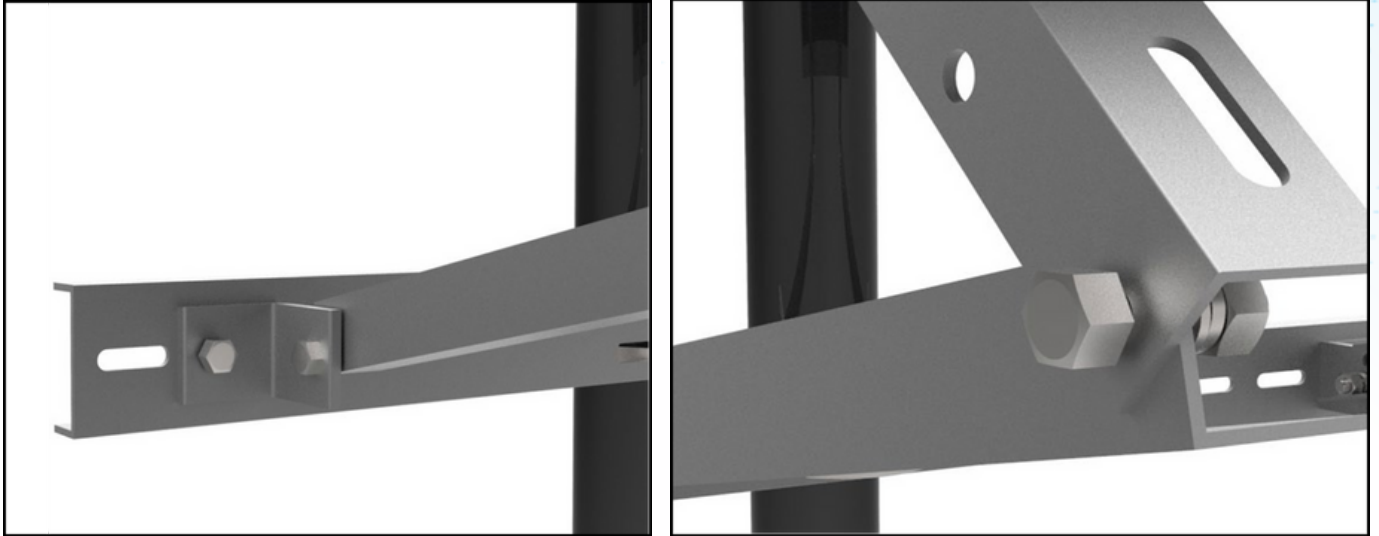
3. Install the brackets to the pole with solar cable tie.

Please be sure to mount this as shown below and not in the live pictures shown in this document. The pictures use a different style mount and are meant to reflect wiring connections only.



Mounting Steps

4. Install support Arms on the lower bracket. Angle of the panel should be 40 degrees and facing south.



5. Finished.



Connecting the Unit

1. Once the Panel has been mounted, mount the Battery box below the panel and the BLE reader above the panel. Both Battery box and BLE unit include mounting plates and large hose clamps. Ideally the BLE unit is mounted 8-10' off the ground. PLEASE NOTE THE PICTURE BELOW IS OF AN OLDER MOUNT SOME THINGS MAY APPEAR DIFFERENTLY THIS PICTURE IS FOR WIRING REFERENCE AND OVERALL LAYOUT.
2. Once every thing has been mounted connect all necessary wires (see below for correct locations) and be sure to ziptie any loose wiring. Once everything has been connected contact Eyrus support to ensure everything has come online appropriately.

